

Quantitative Standards Compliance Matrix - 3 Bed 5 Person House

Standards	Min Floor Area	Min Living Room Area	Aggregate Living Area	Min Living Room Width	Min Storage Area	Aggregate Bedroom Area	Master Bed Size	Double Bed Size	Double Bed Width	Single Bed Size	Single Bed Width	Parking Spaces	Private Open Space
Quality Housing / Fingal Standards	92.0m²	13.0m²	34.0m²	3.8m	5.0m²	32.0m²	13.0m²	11.4m²	2.8m	7.1m²	2.1m	-	60.0m²
Standard Provided	103m²	19m²	36.6m²	✓	8.8m²	33.0m²	13.1m²	11.4m²	✓	7.4m²	✓	2	63m²

References
Quality Housing For Sustainable Communities - 2007

Notes:
**Private Open Space includes ground floor and upper level terraces. Ground floor private open space will vary between plots.






Area	
Level 0	51m²
Level 1	52m²
Level 2	
TOTAL	103m²
Glenveagh 3 bed target area: 108m² 114m² & 125m²	
Note: Area measured according to RICS	

Quantity

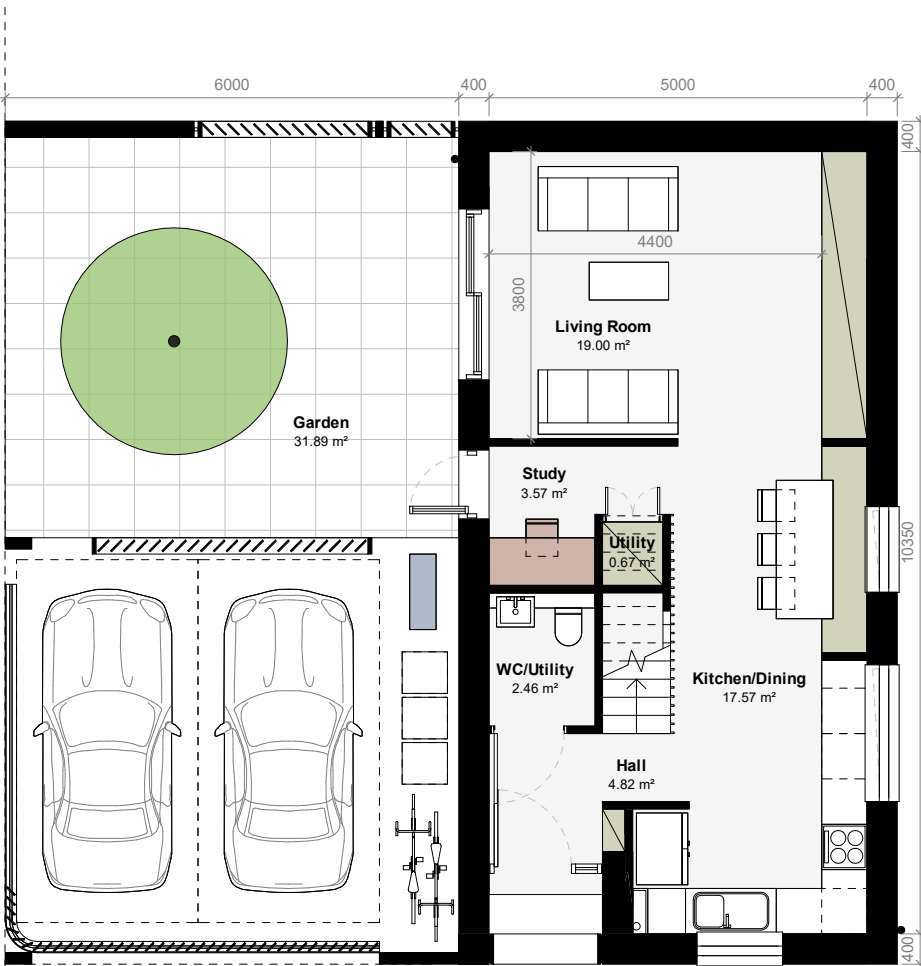
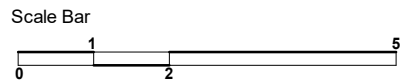
1

- general notes
- ☐ This drawing is copyright Proctor and Matthews Architects and must not be copied in whole or part without prior consent.
 - Do not scale from this drawing.
 - Refer to drawing number.
 - This drawing is to be read in conjunction with all other relevant architects and engineer's drawings.
 - All dimensions to be checked on site prior to commencement of works and any discrepancies are to be checked with the architect immediately.
 - Unless otherwise stated all dimensions are in mm.

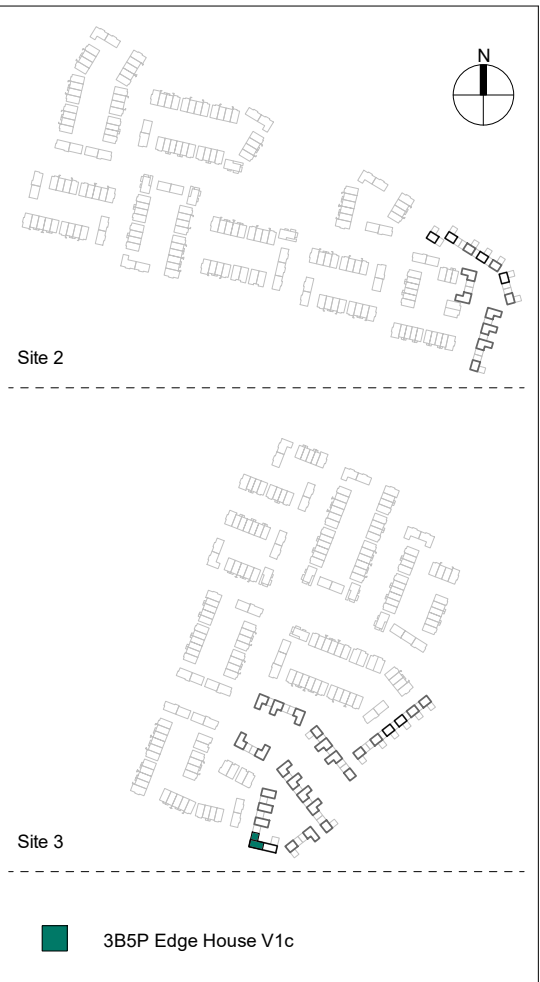
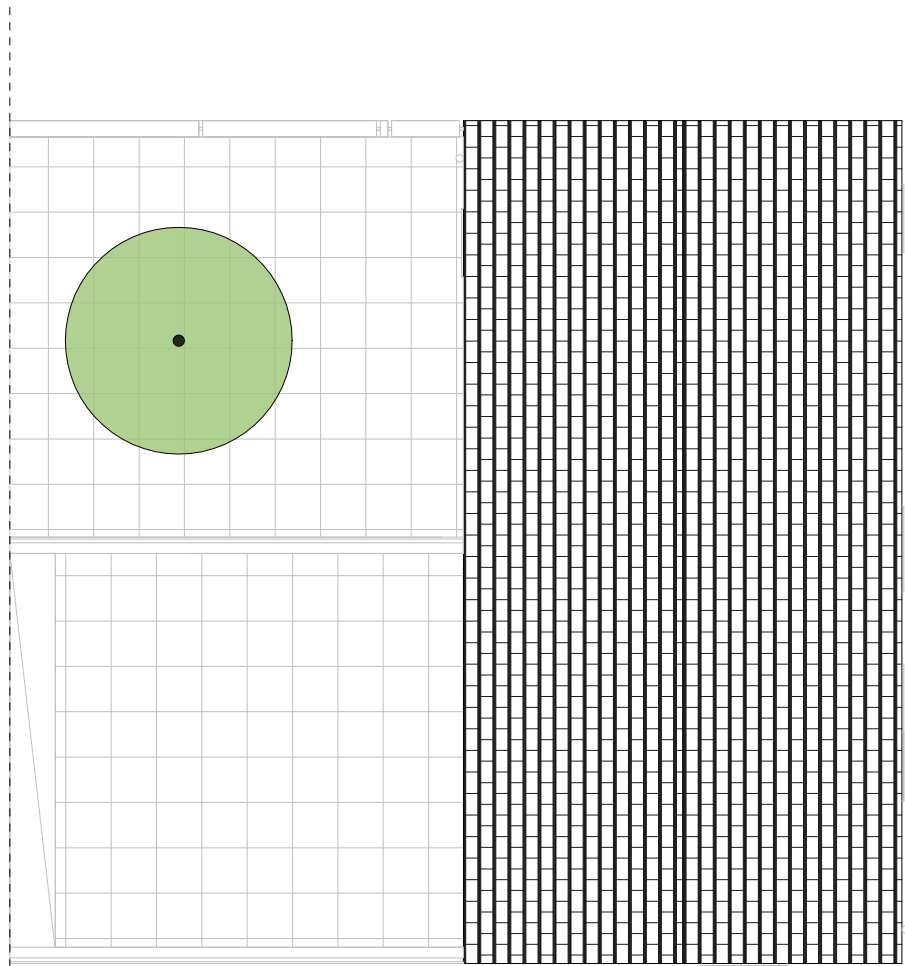
Typology Notes

-  Main Entrance Main entrance
-  Home Office Area
-  Air Source Heat Pump
-  Service Intake Cupboard
-  Storage Area

Floor to floor: 2790mm
Floor to ceiling: 2450mm
Floor zone: 340mm



Plot 389



P02	08.12.21	For Planning	LG
P01	26.10.21	For Planning	LG
/	19.03.21	For Planning	HS
rev	date	description	dw

client Glenveagh

project A496 Lands at Hollystown-Kilmartin

status S4 - Suitable for stage approval

drawing title 3 Bed 5 Person 2 Storey Edge House (Side by Side Parking) V1c - Plans

drawing no A496-PMA-XX-XX-DR-A-1003

project no - originator - volume - level - type - role - number			
scale 1:100	date 15/03/21	drawn MCG	
original A2	revision P02	checked CM	

Proctor & Matthews Architects

address 7 Blue Lion Place, 237 Long Lane, London SE1 4PU
telephone +44 (0)20 7378 6695
fax +44 (0)20 7378 1372
email info@proctorandmatthews.com
website www.proctorandmatthews.com